

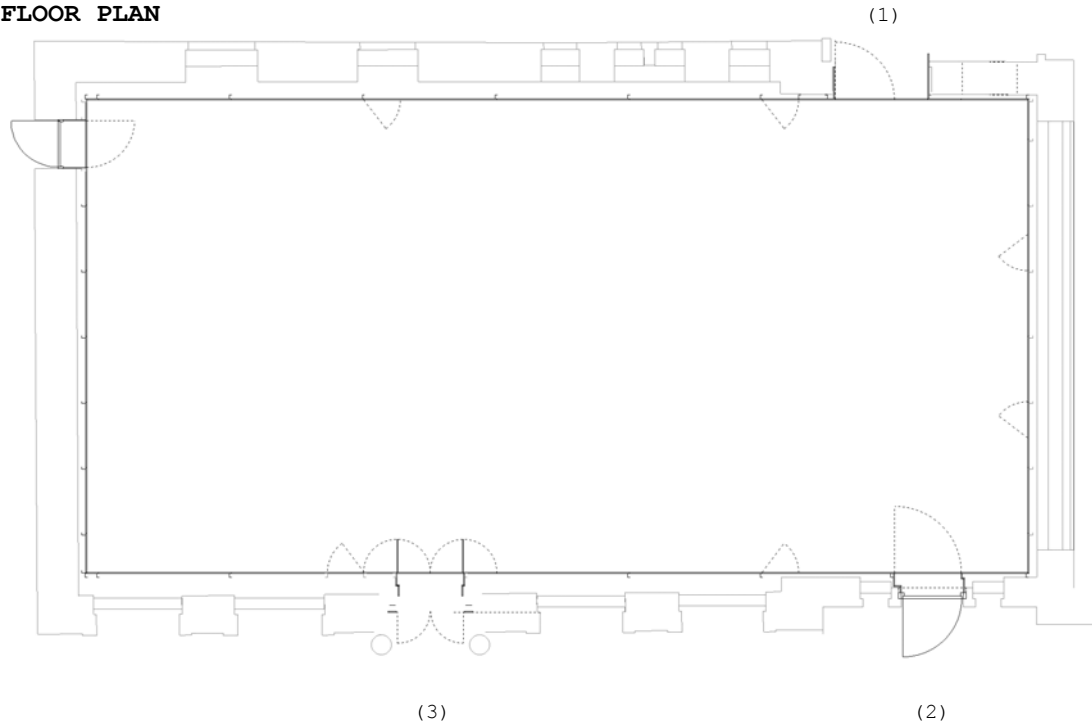
## CCA5 Technical Specification

### Dimensions

16.5m x 8.5m ( approx )

Max stage size 8m(deep) x 7.3m(wide)

### FLOOR PLAN



### Access

- (1) - Access via goods lift - 1500W x 2300H x 2640D (mm)
- (2) - Access via public entrance at Scott Street - 2310H x 970W (mm)
- (3) - " " - 2280H x 800W (mm)

### Features

Hearing Assistance Headsets  
Audio Description Facilities  
Projection Screen  
Tension Wire Grid With fixed position Hanging bars. [ See separate sheet ]

### CCA 5 options

Lectern with direct Connection for laptops to Data Projector.  
Portable AV Rack ( DVD ,VHS, CD, Tape)  
Conference Microphones ( Lapel / Handheld / Table )  
Black or white rear wall drapes  
Blacks For walls  
Raked Seating Bank or Seating on the flat.  
8 m x 8m Black or Grey Lino Dance Floor  
Crestron Control  
Show relay ( Audio and Video ) to other spaces.

## **CCA5 Technical Specification**

### **Sound System**

#### **FOH System**

4 x Meyer UPA1P active Loudspeakers ( with stands )  
2 x Meyer USW1P active Sub Bass Units  
C-audio EQ 312 31 band Graphic EQ

#### **Mixer**

Soundcraft Sprit 324 Digital Mixer with Sidecars. Maximum 32 Chan with internal Lexicon Effects and 2 Channels of dynamics.  
6 x Aux sends

Mackie 1604-VLZ Pro Analogue Desk - 4 Aux

#### **Outboard**

2 x BSS Opal Duel Compressor  
1 x TLA 5021 Duel Valve Compressor  
1 x Yamaha SPX990 Multi Effects Processor  
1x Drawmer Quad Gate

#### **Microphones**

Shure, AKG, Beyerdynamic, Sennheiser, Neumann, EV.  
BSS and Berhinger DI Boxes.  
Sennheiser Radio Microphone System

#### **Fold Back System**

Mackie SRM450 Powered Monitors  
JBL EON Powered Monitors  
Berhinger Ultra Graph Pro 31 band Graphic EQ's

#### **Control room monitoring**

Genelec 1029a Active Loudspeakers

#### **Playback / Display Equipment**

Philips CD753 CD player  
Tascam MD801R mark 2 Mini Disc Recorder  
Tascam DA-20 16bit 44.1/48Khz Dat Recorder  
Tascam 302 Duel Cassette Recorder  
Samsung Multi format VHS Recorder  
Pioneer V7300D DVD player  
Sharp - XGV10WE Data Projector(4700 lumens)  
Kodak Ektapro 9020 Slide Projectors  
Projection Screen ( 370cm x 400cm approx)  
Technics 1210 decks and Neumark Mixer.  
Duel CD Player - Gemini CDS1000

#### **Additional Items**

IR Audio headsets.  
Canford Techpro Ring Intercom System  
Crestron Controller.

## CCA5 Technical Specification

### Lighting

2 Sensor dimmer racks providing a total of:  
110 ways of 3kw (ED15AF modules) and  
10 ways of 5kw (ED25AF modules, ch 7-10 and ch 79-84)  
Each rack on 100amp 3-phase  
(see separate work sheet for phase distribution)

### Control Desk

Strand 430 (pentium), 350 channel with GeniusPro 2.5  
15" monitor

Zero 88 Fat Frog, 48 channel, Moving light control

### Lanterns

18 x 1.2k Cantana Fresnel, barn doors, gel frame  
18 x 650w Quartet Fresnel, barn doors, gel frame  
4 x 2.5k Strand Alto Fresnel  
6 x 1.2k Cantana PC, barn doors, gel frame  
12 x ETC Source 4 - PAR ( 575w Lamps )( with spare lenses )  
12 x Thomas D 1001 - 1k Asymmetric flood  
6 x Hell 5ft 2-way Dimmable Fluorescent  
4 x Moving Head Wash Light - Future Light MH640 (Fresnel)  
12 x ETC Source 4 - 750w 25-50 Zoom Profile (with metal B size Gobo Holders )  
36 x ETC Source 4 - 750w Fixed Angle Profile (Housing only-lenses are separate)

Lenses for above:

2 x 10 degree  
15 x 19 degree  
15 x 26 degree  
15 x 36 degree  
30 x 50 degree

### Stands

6 x Doughty Quasar 6ft stand, takes 19mm spigot  
6 x Doughty 3.5m stand, takes 19mm spigot  
12 x Little Tom bracket to hold 48mm tube on 19mm spigot  
10 x Floor stand, takes 19mm spigot

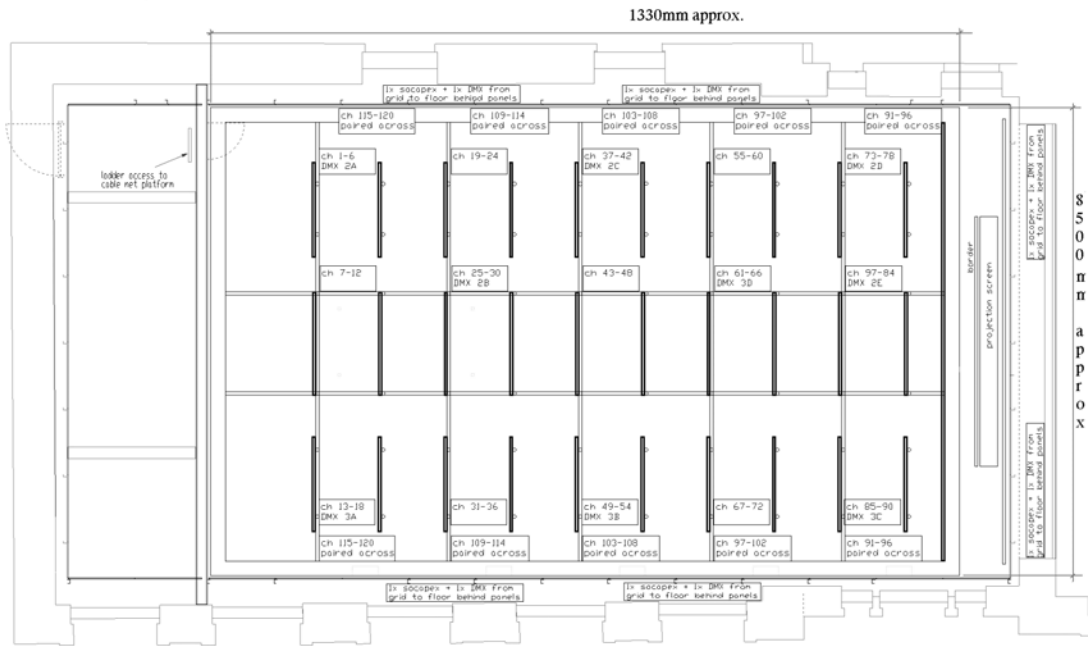
### Spigots

22 x M10 19mm

### Additional Items

15amp TRS Cable Stock  
Socapex Stock  
DMX Cables

# Lighting Grid Plan



CCA 5 Dimmer rack: Phase distribution

Dimmer 1	Phase		Dimmer 2	Phase
1	L1		73	L1
2	L1		74	L1
3	L1		75	L1
4	L1		76	L1
5	L1		77	L1
6	L1		78	L1
19	L1		109	L1
20	L1		110	L1
21	L1		111	L1
22	L1		112	L1
23	L1		113	L1
24	L1		114	L1
37	L1		115	L1
38	L1		116	L1
39	L1		117	L1
40	L1		118	L1
41	L1		119	L1
42	L1		120	L1
55	L1		---	
56	L1		---	
57	L1		---	
58	L1		---	
59	L1		---	
60	L1		---	
7 (5kw)	L2		79 (5kw)	L2
8 (5kw)	L2		80 (5kw)	L2
9 (5kw)	L2		81 (5kw)	L2
10 (5kw)	L2		82 (5kw)	L2
11	L2		83 (5kw)	L2
12	L2		84 (5kw)	L2
25	L2		103	L2
26	L2		104	L2
27	L2		105	L2
28	L2		106	L2
29	L2		107	L2
30	L2		108	L2
43	L2		---	
44	L2		---	
45	L2		---	
46	L2		---	
47	L2		---	
48	L2		---	
61	L2		---	

62	L2		---	
63	L2		---	
64	L2		---	
65	L2		---	
66	L2		---	
13	L3		85	L3
14	L3		86	L3
15	L3		87	L3
16	L3		88	L3
17	L3		89	L3
18	L3		90	L3
31	L3		91	L3
32	L3		92	L3
33	L3		93	L3
34	L3		94	L3
35	L3		95	L3
36	L3		96	L3
49	L3		97	L3
50	L3		98	L3
51	L3		99	L3
52	L3		100	L3
53	L3		101	L3
54	L3		102	L3
67	L3		---	
68	L3		---	
69	L3		---	
70	L3		---	
71	L3		---	
72	L3		---	